

# Shared Facilities Subsidies



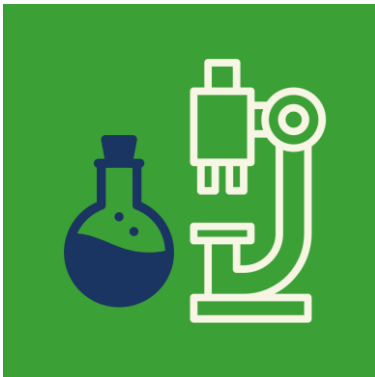
Maximize productivity and accelerate innovation by sharing facilities. Sharing facilities is fast, sustainable and cost-effective. Regiodeal Foodvalley offers companies and institutes subsidies for sharing facilities in the areas of protein transition, food and health and/or circular agrifood.

## SUBSIDY

### Advanced research equipment

#### Investment conditions

The shared advanced research equipment, TLR-1-3, max. € 125k per project request, in the domain protein transition, food & health and/or circular agrifood, is shared via open access.



- Innovative and unique
- Benefits organizations in the ecosystem and will be realized in collaboration with Wageningen University & Research
- Pay-per-use principle
- € 5 million available
- Open call till end 2024

Information about the conditions & application, please send your request to [facilities@foodvalley.nl](mailto:facilities@foodvalley.nl).

Explore more opportunities to find & share facilities via [www.foodleap.com](http://www.foodleap.com)

# Shared Facilities Subsidies



Maximize productivity and accelerate innovation by sharing facilities. Sharing facilities is fast, sustainable and cost-effective. Regiodeal Foodvalley offers companies and institutes subsidies for sharing facilities in the areas of protein transition, food and health and/or circular agrifood.

## SUBSIDY

### Innovation facilities

#### Investment conditions

The shared innovation facility is a pilot production, demonstration and/or test facility, TRL 4-8, in the domain of protein transition, food & health and/or circular agrifood.



- Innovative and unique
- An innovation cluster needs to be set up of at least 3 partners (including a knowledge partner)
- Benefit organizations in Utrecht/Gelderland
- Open access to all organizations
- €4 million available
- Deadline application initiatives 30<sup>th</sup> June 2024
- Deadline exploitation 31<sup>st</sup> August 2029

Information about the conditions & application, please send your request to [facilities@foodvalley.nl](mailto:facilities@foodvalley.nl).

Explore more opportunities to find & share facilities via [www.foodleap.com](http://www.foodleap.com)

# Shared Facilities Subsidies



Maximize productivity and accelerate innovation by sharing facilities. Sharing facilities is fast, sustainable and cost-effective. Regiodeal Foodvalley offers companies and institutes subsidies for sharing facilities in the areas of protein transition, food and health and/or circular agrifood.

## SUBSIDY SME Innovation Voucher

### Investment conditions

The subsidy provides SMEs with a unique opportunity to access the scientific talent and facilities they need to develop (TRL 4-6) and demonstrate (TRL 7-8) innovative products.

- SME must be incorporated and registered to execute business in the Netherlands and or EU
- €950,000 available
- Max. 50% co-financing, with funding from a €10,000 to €50,000 towards an eligible project
- The implementation of the subsidy must utilize facilities in the Region Gelderland and or Utrecht



Information about the conditions & application, please send your request to [facilities@foodvalley.nl](mailto:facilities@foodvalley.nl).

Explore more opportunities to find & share facilities via [www.foodleap.com](http://www.foodleap.com)