

# REGIO FOODVALLEY: 'NATURAL ENTREPRENEURSHIP!'

## Key points from our Strategic Agenda 2026-2030

At the heart of the Netherlands is Regio Foodvalley: the international top region for food. Here, government agencies work with entrepreneurs and knowledge institutions on future-proof food development and production. Not just in the Netherlands but also far beyond. In our region, people and institutions, including Wageningen University & Research, work on an international scale on the food system of the future. A food system that is sustainable, healthy and affordable.

Here we combine theory and practice to bring knowledge and innovation to life in the food chain. The unique combination of our top knowledge institutions, innovative companies (including established names, start-ups and scale-ups) and powerful agricultural sector makes our region a key player in the global food supply and healthy future for people and nature.



# About Regio Foodvalley

## Regio Foodvalley in numbers

Population in 2024	387.000
Municipalities	8
Jobs	195.000
Business establishments with employment	39.000 of which 70% Sole proprietorships

## Regio Foodvalley in surface area

Total	69.550 ha
Agriculture	42%
Nature	37%
Buildings	14%
Infrastructure	6%
Water	1%

### Core of our Strategic Agenda 2026-2030: Regio Foodvalley is about natural entrepreneurship!

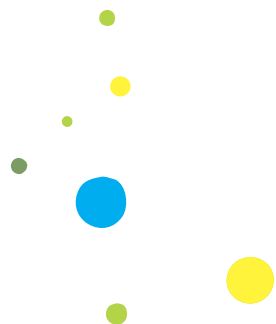
In Regio Foodvalley, we are committed to creating a very strong food cluster and ambitiously work to resolve the major challenges facing the Netherlands. The population of our region is growing rapidly. Entrepreneurs, education and government are working together to balance that growth. And on coordinated investments in housing, infrastructure, energy, economy and the rural area. Only then will we maintain broad prosperity, promote healthy living, work towards a future-proof economy from our powerful small and medium-sized enterprises and contribute to a strong natural environment.

### Future-proof economy and responsible growth

Regio Foodvalley stands for a future-proof economy and responsible growth. Many major social issues that are at play nationwide are particularly relevant here: we are working to strike a balance between a strong agricultural sector and protecting our fragile nature, between food production and nature conservation. As an illustration, there are around 1,200 peak emitters (about 40 percent of the Dutch total) in our region, most of them near the vulnerable Veluwe region. Nowhere else in the Netherlands is the situation as dire as in Regio Foodvalley. At the same time, we have big housing ambitions, are working hard on our accessibility and grid capacity, and training and creating jobs for our residents. This is challenging, but by working together, we are taking steps forward. All the challenges and tasks that come together here are not easy, forcing us to innovate and develop new solution directions. But that also offers opportunities. The collaborating government agencies, entrepreneurs and education and knowledge institutions in Regio Foodvalley are working on solutions relevant to the whole of the Netherlands and beyond.

### Regio Foodvalley valuable to the Netherlands

- **Food:** the region is the showpiece for the Netherlands as a leading country on the topic of food. The unique combination of high-quality knowledge institutions and innovative production companies in all links of the foodchain is what makes us strong as a region and is essential for a sustainable food supply.
- **Housing:** as a region, we make a solid contribution to the national housing task by building 40,000 homes. We experience the importance of responsible growth on a daily basis. Because its impact on the economy and on themes like accessibility and broad prosperity is huge.
- **Future prospects** for agriculture: with an innovative measurement network for nitrogen reduction, we lay the foundations for solutions in which the farmer is at the helm, and we renew agriculture by focusing on future-proof earning capacity, innovations, the protein transition and regenerative agriculture.
- **Vital natural system:** we have responsibility for and are committed to the conservation of natural areas and drinking water resources which are of national importance.



### Our ambitions for the coming years:

- We are developing Regio Foodvalley into a leading ecosystem for achieving a future-proof food system. We want to be the place where national and international policymakers, knowledge institutions, companies, entrepreneurs, talents and investors work together to find solutions to global food challenges.
- Develop a future-proof agricultural sector. Our aim is an enterprising and vital rural area with long-term prospects. That requires an agricultural sector of sufficient size, with earning capacity, target management and innovative production methods.
- Facilitate strong and innovative SMEs, broader than just the food sector. For example, construction, metal and ICT. For this, we need adequately qualified people and we are working towards the sustainable accessibility of the region and country.
- More landscape and more city go hand in hand in Regio Foodvalley. Preserve the unique features of our region and ensure liveability and broad prosperity.
- Achieve a scale leap due to the major urbanisation challenge. Growth in balance is the starting point here.
- Achieve nature restoration and a robust water system. A resilient natural system that is robust and with which we can protect our (nationally important) drinking water resources.

### Regio Foodvalley, a region of innovative thinkers and doers

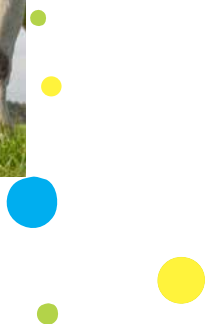
Many solutions to social challenges have already been thought through and elaborated here in the region. For us, this is logical and obvious. We are a vital and resilient region with great innovative and entrepreneurial potential. For example, Wageningen University & Research is a global leader in research on nutrition and food production, living environment and health.

We are an entrepreneurial region with a healthy business climate. Not surprisingly, SMEs have a strong presence here. Experience, expertise, scientific research and innovativeness are all here. Government agencies and public bodies, entrepreneurs and education and knowledge institutions from secondary, vocational and academic higher education work together. For years, solution-oriented and entrepreneurial, typical of Regio Foodvalley. We want to structurally support and boost the impact of our economic, innovative ecosystem, based on the Strategic Agenda 2026-2030. Together with the national government, provinces and other domestic and foreign regions and partners.

### Collaboration within and with Regio Foodvalley effective and necessary

Much has been achieved in recent years. In the coming years, we will build on this. The collaboration between entrepreneurs, education and government in our region is the proof: together you achieve more. Additional financing from outside the region has been responsibly and effectively invested through NOVEX Area Funds, Regionale Energiestrategie, Woondeal, Mobiliteitsgelden and Regio Deal, for example.

We have a lot to offer, but we cannot fulfil our ambitions alone. **Our accessibility and that of the Netherlands is under severe pressure** due to bottlenecks on national roads crossing our region, we are in the middle of the area where **grid congestion makes it impossible to connect homes and businesses** and our region has **a very high concentration of peak emitters as well as a lot of vulnerable nature of national importance**, such as the Veluwe.





**That is why, for several themes, we need our partners in The Hague and the province(s):**

- **Economy/food:** strengthen the framework conditions for the knowledge, innovation and production cluster in Regio Foodvalley and position the region internationally as an innovator of the global food system.
- **Rural area:** take measures to restore nature, achieve the basic quality of nature in rural and urban areas and give agriculture a long-term perspective for the future.
- **Living and working:** unlock residential development and businesses in Regio Foodvalley by fulfilling preconditions such as accessibility, grid capacity and nitrogen quota.
- **Accessibility:** tackle national traffic bottlenecks in our region (Hoevelaken interchange and A1/A30 junction near Barneveld) as a matter of priority and reinforce high-quality public transport and bicycle connections.
- **Grid capacity:** designate Regio Foodvalley as the energy region of the future and implement legal-spatial frameworks to apply innovative solutions to grid congestion.

**Join in!**

With our Strategic Agenda 2026 - 2030, we are reaching out to our partners. We need each other and we have a lot to offer each other. Join us. Talk to us. Let's work together to create a resilient and vital region and a resilient and vital Netherlands.



**Who are we?**

Regio Foodvalley is a partnership between the municipalities of Barneveld, Ede, Nijkerk, Renswoude, Rhenen, Scherpenzeel, Veenendaal and Wageningen. Via the Economic Board, the collaboration with entrepreneurs and education and knowledge institutions is established.



**Want to know more: [www.regiofoodvalley.nl](http://www.regiofoodvalley.nl)**

